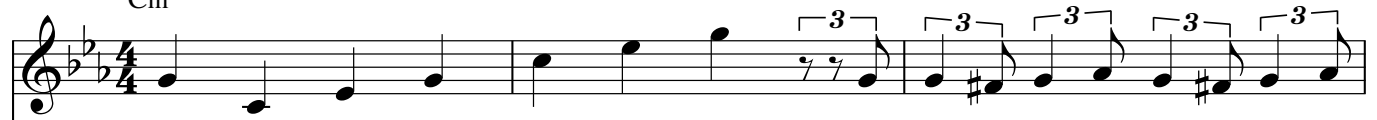


Dedicated for introspection between wife and husband by Mother's Grace

GOD'S LOVE IN YOUR HEART

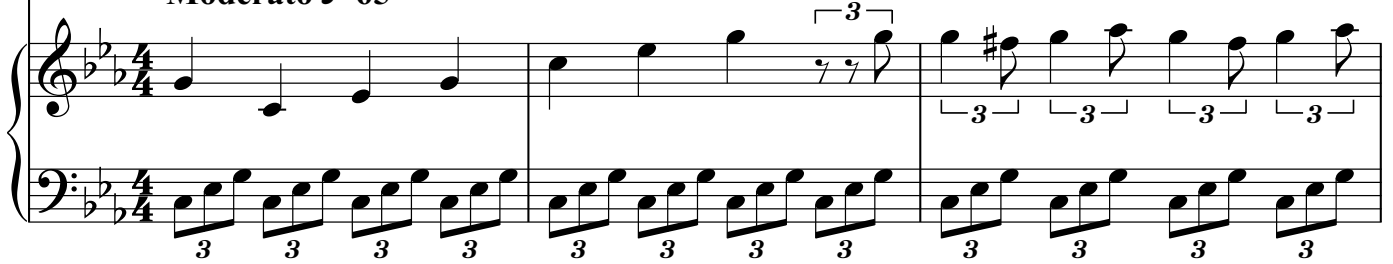
Original music with Russian lyrics "Pogoda v dome" by V.Gorobez
New version music with Sanskrit and English lyrics by Sergey Nirmalite

Moderato ♩=65
Cm



1. Shri Ni-rmal A - tma A - na-nda Swa
2. You see - ek the co-mfort of Yo - ur
3. Shri Ni-rmal A - tma A - na-nda Swa
4. You see - ek the co-mfort of Yo - ur

Moderato ♩=65



4 Fm

Cm

mi - ni Shri Pa - ram A - tma Sat Chit A - na - nda - a Shri
Spi - rit! That gives you Joy Your Pro - pe - rty of Jo - oy! The
mi - ni Shri Pa - ram A - tma Sat Chit A - na - nda - a Shri
Spi - rit! That gives you Joy Your Pro - pe - rty of Jo - oy! The

7

G

Ni - rma - la - a A - tma Na - a - mo - o Shri Ni - rma - la Na - mo - o Na - ma -
Spi - rit i - is sa - ti - sfi - i - i - ied by i - its O - own Spi - i - i - i -
Ni - rma - la - a A - tma Na - a - mo - o Shri Ni - rma - la Na - mo - o Na - ma -
Spi - rit i - is sa - ti - sfi - i - i - ied by i - its O - own Spi - i - i - i -

10 Cm

ha!
rit!
ha!
rit!

What kind pro - je - ction You have to day
What kind pro - gno - sis? Rain or ve - ry
To - day like wind you have 'would like' in
What kind pro - gno - sis if sky ve - ry

13 Fm G Cm G

Da - rling?!
ho - ot?!
Ea - east!
pu - ure?!

What kind 'would like' a - gainst our O - o - neness?!
Does not e - xpect big trau - ble at that time?!
To - mo - rrow your 'would like' U - turn to West!
What we can wait? Spring time or snow and cold?!

By
Su -
Next
Say

16 Cm Fm

God please say me si - mply a - and ho - nestly: what
rprise like earth - quake you have new 'would li - ke' pre -
day your mind di - rect to co - old No - orth! Or
to me All! Be - cause next be too la - ate! And

18 Bb Eb B+ Cm

can You find_ for Love from o - ut- side?! Grea - test of all_____ God's Love in
 dict I can_ not ne - ver a - ny time! Grea - test of all_____ full Peace wi-
 So- uth heat_ by se - ve-nty 'would like'?! How you find Peace?!_____ So much di-
 gu-ilty will_ be o - nly o - nly we! Grea - test of all_____ God's Love in

21 Fm G Cm C7

your heart!_____ But all a - no - ther Va - ni - ty! Find Love in
 thin us!_____ But all a - no - ther Va - ni ty! A - chi-eve
 re - ctions?!_ Rou-tine 'would like' in e - very day?! Wi - tho-out
 your heart!_____ But all a - no - ther Va - ni - ty! A - chi-eve

24 Fm Cm Fm Bb

Spi - rit! But all a - no - ther can be done by Shri A - di Sha - a -
 Spi - rit! But all a - no - ther can be done by Shri A - di Sha - a -
 One_____ Pri - o - ri - ty - y: find Love in your heart from A - di Sha -
 Spi - rit! But all a - no - ther can be done by Shri A - di Sha - a -

27 Eb C7 Fm Cm

kti! Find Love in Spi - rit! But all a - no - ther does A - di
kti! Be - co - mming Spi - rit! But all a - no - ther does A - di
kti?! Wi - tho - out One Pri - o - ri - ty - y: find Love in
kti! Be - co - mming Spi - rit! But all a - no - ther does A - di//

30 Fm G Cm Ab Fm G

Sha - kti of God A - lmi - i - ghty! //Sha - kti God's Love
Sha - kti of God A - lmi - i - ghty!
your heart from A - di Sha - kti?!

33 Cm Ab G Cm Ab Cm

God's Love A - lmi - i - ghty!