

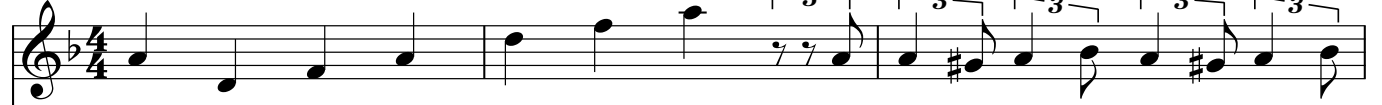
Dedicated for introspection between wife and husband by Mother's Grace

GOD'S LOVE IN YOUR HEART

Original music with Russian lyrics "Pogoda v dome" by V.Gorobez
New version music with Sanskrit and English lyrics by Sergey Nirmalite

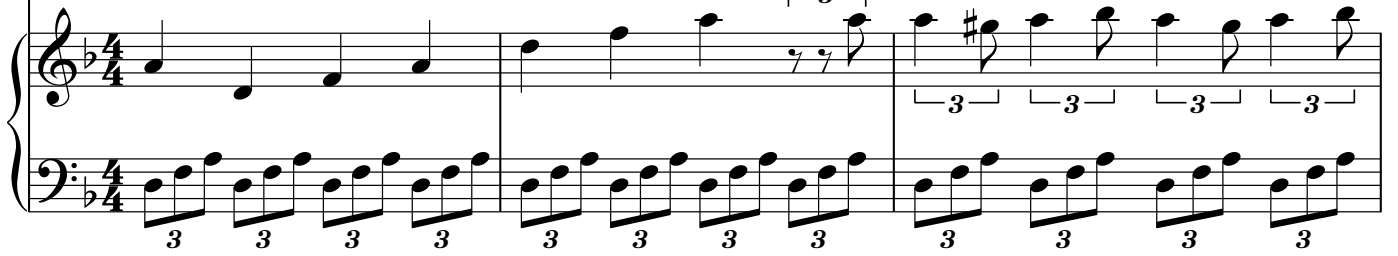
Moderato ♩=65

Dm



1. Shri Ni - rmal A - tma A - na - nda Swa
2. You see - ek the co - mfort of Yo - ur
3. Shri Ni - rmal A - tma A - na - nda Swa
4. You see - ek the co - mfort of Yo - ur

Moderato ♩=65

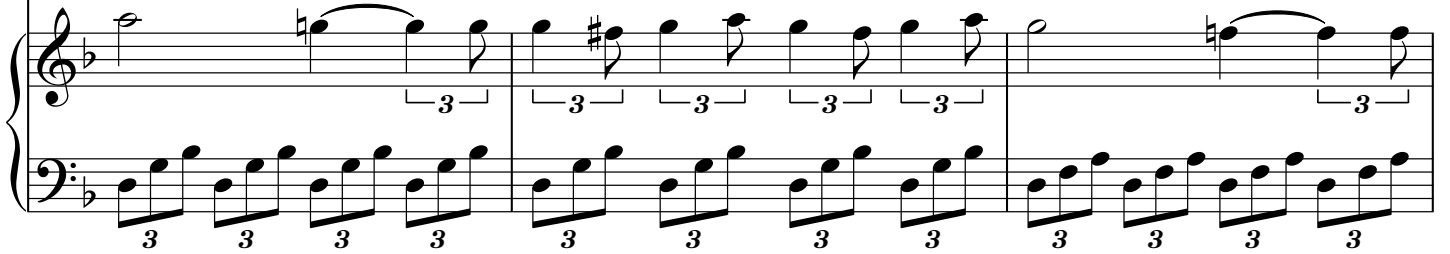


4 Gm

Dm

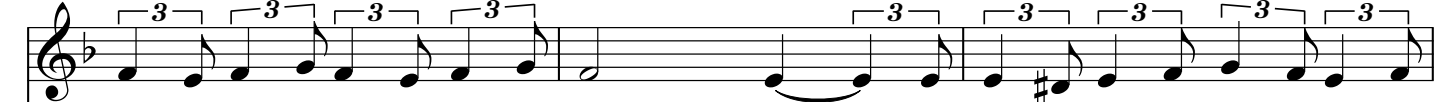


mi - ni Shri Pa - ram A - tma Sat Chit A - na - nda - a Shri
Spi - rit! That gives you Joy Your Pro - pe - rty of Jo - oy! The
mi - ni Shri Pa - ram A - tma Sat Chit A - na - nda - a Shri
Spi - rit! That gives you Joy Your Pro - pe - rty of Jo - oy! The

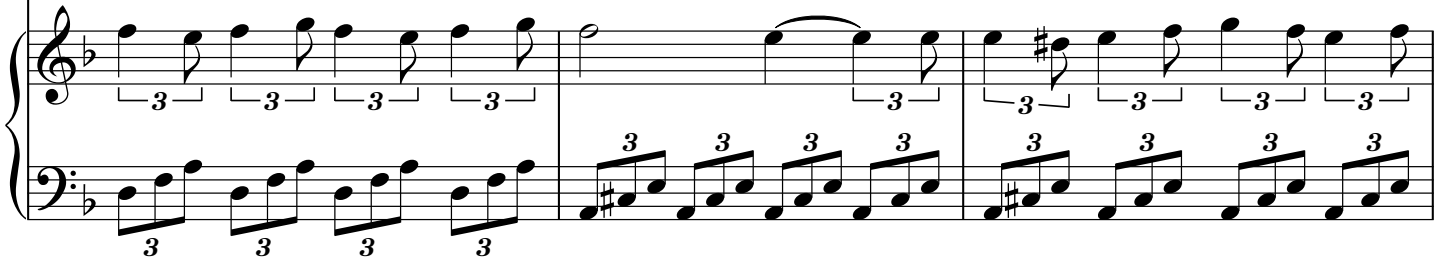


7

A



Ni - rma - la - a A - tma Na - a - mo - o Shri Ni - rma - la Na - mo - o Na - ma
Spi - rit i - is sa - ti - sfi - i - i - ied by i - its O - own Spi - i - i - i -
Ni - rma - la - a A - tma Na - a - mo - o Shri Ni - rma - la Na - mo - o Na - ma
Spi - rit i - is sa - ti - sfi - i - i - ied by i - its O - own Spi - i - i - i -



10 Dm

ha! rit! ha! rit!

What kind pro - je - ction You have to day
What kind pro - gno - sis? Rain or ve - ry
To - day like wind you have 'would like' in
What kind pro - gno - sis if sky ve - ry

13 Gm

A

Dm

A

Da - rling?! ho - ot?! Ea - east! pu - ure?!

What kind 'would like' a - gainst our O - o - neness?!
Does not e - xpect big trau - ble at that time?!
To - mo - rrow your 'would like' U - turn to West!
What we can wait? Spring time or snow and cold?!

By Su - Next Say

16 Dm

Gm

God please say me si - mply a - and ho - nestly: what
rprise like earth - quake you have new 'would li - ike' pre -
day your mind di - rect to co - old No - orth! Or
to me All! Be - cause next be too la - ate! And

18 C F C# Dm

can You find_ for Love from o - ut - side?! Grea - test of all_____ God's Love in
 dict I can_ not ne - ver a - ny time! Grea - test of all_____ full Peace wi -
 So - uth heat_ by se - ve - nty 'would like'?! How you find Peace?!_____ So much di -
 gu - ilty will_ be o - nly o - nly we! Grea - test of all_____ God's Love in

21 Gm A Dm D7

your heart!___ But all a - no - ther Va - ni - ty! Find Love in
 thin us!___ But all a - no - ther Va - ni ty! A - chi - eve
 re - ctions?!_ Rou - tine 'would like' in e - very day?! Wi - tho - out
 your heart!___ But all a - no - ther Va - ni - ty! A - chi - eve

24 Gm Dm Gm C

Spi - rit! But all a - no - ther can be done by Shri A - di Sha - a -
 Spi - rit! But all a - no - ther can be done by Shri A - di Sha - a -
 One_____ Pri - o - ri - ty - y: find Love in your heart from A - di Sha -
 Spi - rit! But all a - no - ther can be done by Shri A - di Sha - a -

27 F D7 Gm Dm

kti! Find Love in Spi - rit! But all a - no - ther does A - di
kti! Be - co-mming Spi - rit! But all a - no - ther does A - di
kti?! Wi - tho - out One Pri - o - ri - ty - y: find Love in
kti! Be - co-mming Spi - rit! But all a - no - ther does A - di//

30 Gm A Dm Bb Gm A

Sha - kti of God A-lmi - i - ghty! //Sha - kti God's Love
Sha - kti of God A-lmi - i - ghty!
your heart_ from A - di Sha- kti?!

33 Dm Bb A Dm Bb Dm

God's Love A - lmi - i - ghty!