

Voice

Dedicated to our Recognition of SHRI MATAJI NIRMALA DEVI as the ADI SHAKTI

COOL BREEZE BRAHMACHAITANYA

Original music "O del mio dolce ardor" by C. Gluck

New version music by Sergey Nirmalite

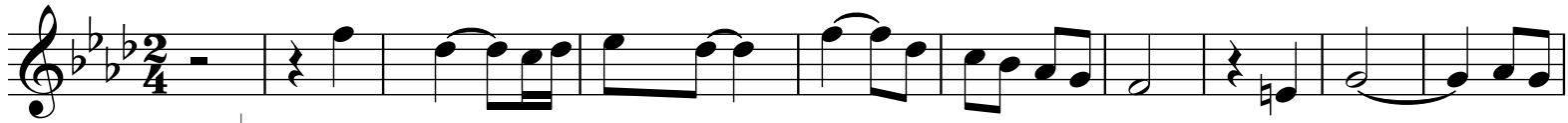
Lyrics by Sylvia & Sergey Nirmalite

Fm

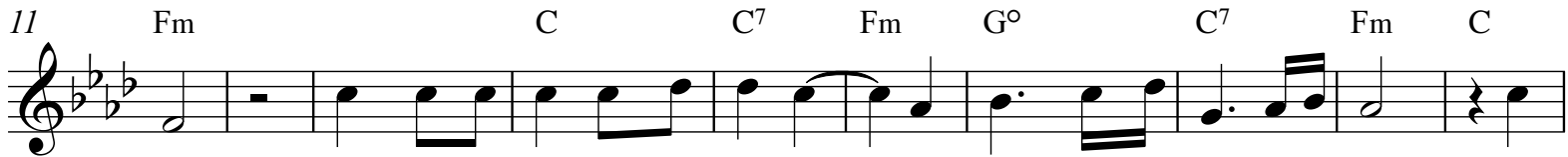
Bbm⁶

Fm

C⁷



Moderato ♩=50 (for any instrument)



Fm

C

C⁷

Fm

G^o

C⁷

Fm

C

When you are fee-ling CoolBree eze BRAHMA-CHA-A-ITA-A-A NYA BRA



Bbm

B^{o7}

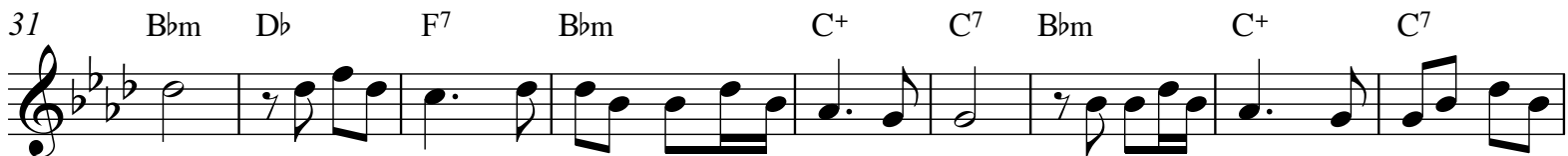
C

F⁷

Bbm

F⁷

HMA CHA-ITA-A-NYA! You u-nderstand who is Mo-o-ther! Di-vi-ine Mo-o-



Bbm

D^b

F⁷

Bbm

C⁺

C⁷

Bbm

C⁺

C⁷

ther! (for instrument) Pri-mo-rdi-al Mo-o-ther! (for instrument) Shri A-di



C⁺

C⁷

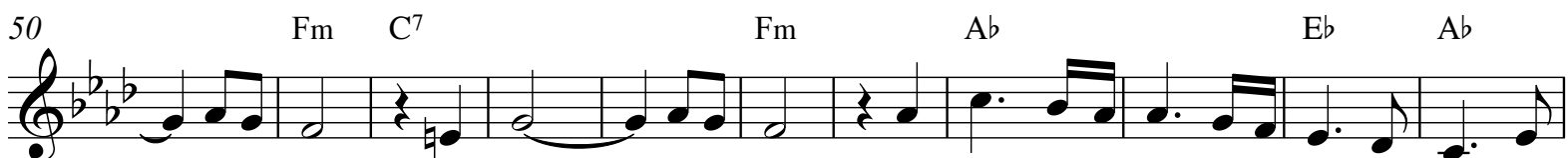
Fm

Bbm⁶

Fm

C⁷

Sha-a-kti! La-li-i-i-ta-a A-mbi-ka-a Ni-rma-la Shri De-



Fm

C⁷

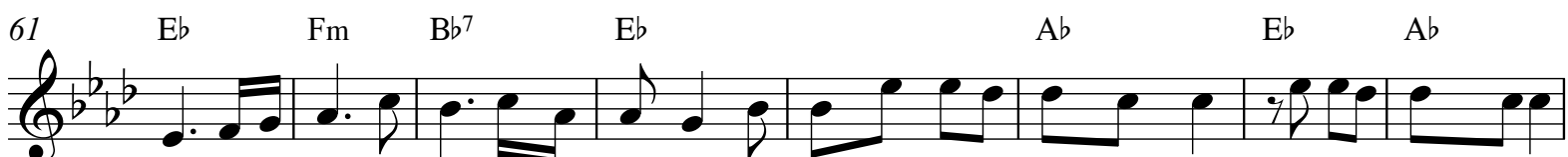
Fm

A^b

E^b

A^b

-e-e-vi! (for instrument) Be-cause She-e has re-su-rre-ected your



E^b

Fm

B^{b7}

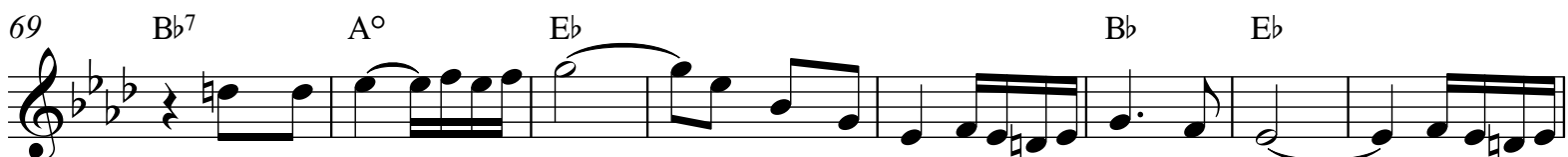
E^b

A^b

E^b

A^b

Spi-rit in-side! In-side in your hea-art! Andgave you gla-a-dness and bliss! (for instrument)



B^{b7}

A^o

E^b

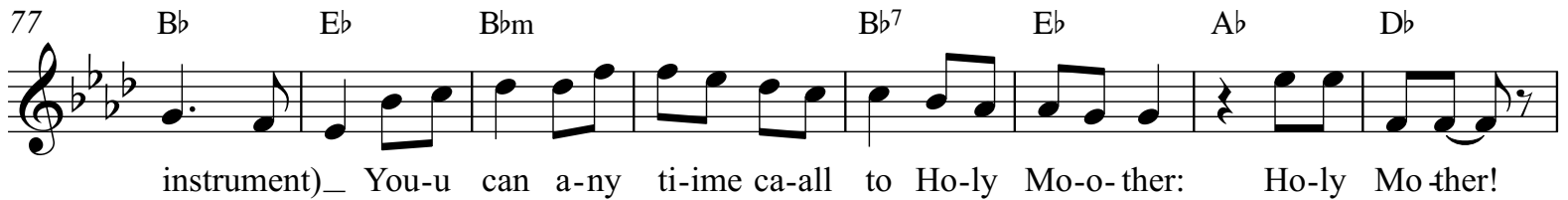
B^b

E^b

Gave you gla-a-a-a - a-dness Di-vi-i-i-i-i-ine bliss! (for instrument)

Voice

77 B \flat E \flat B \flat m B \flat ⁷ E \flat A \flat D \flat



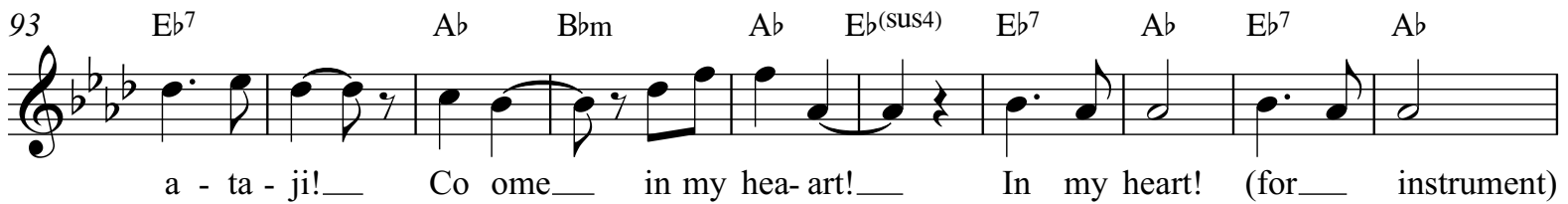
instrument) You-u can a-ny ti-ime ca-all to Ho-ly Mo-o-ther: Ho-ly Mo-ther!

85 E \flat Fm E \flat A \flat



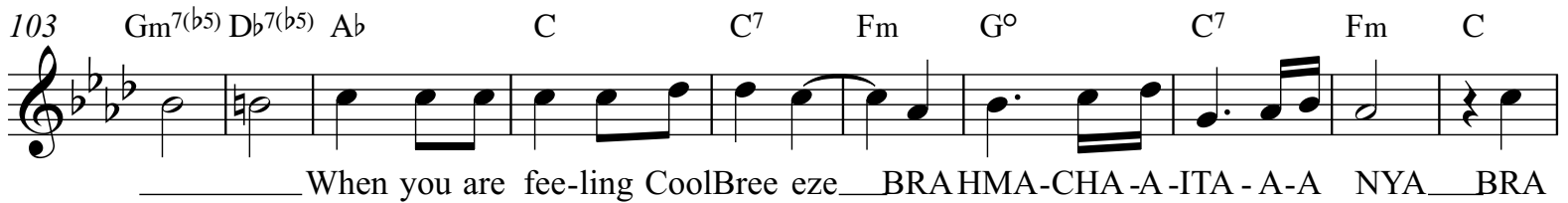
Come in my heart! Shri Ma-ta - ji! Come in my heart! Shri Ma-a-a-a-a

93 E \flat ⁷ A \flat B \flat m A \flat E \flat (sus4) E \flat ⁷ A \flat E \flat ⁷ A \flat



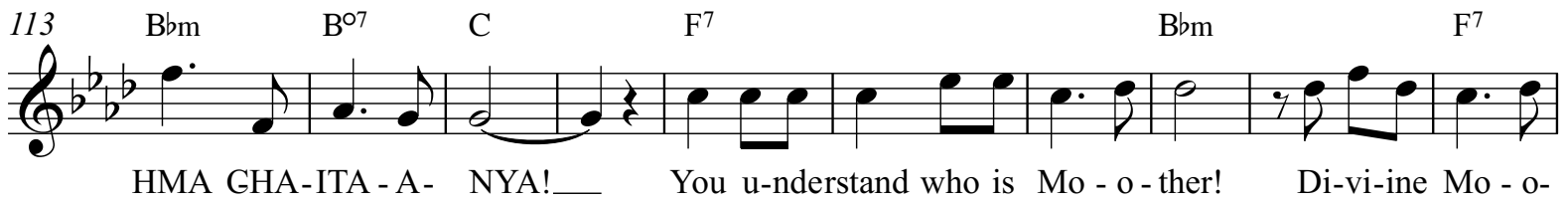
a - ta - ji! Co ome in my hea- art! In my heart! (for instrument)

103 Gm⁷(b5) D \flat ⁷(b5) A \flat C C⁷ Fm G $^{\circ}$ C⁷ Fm C



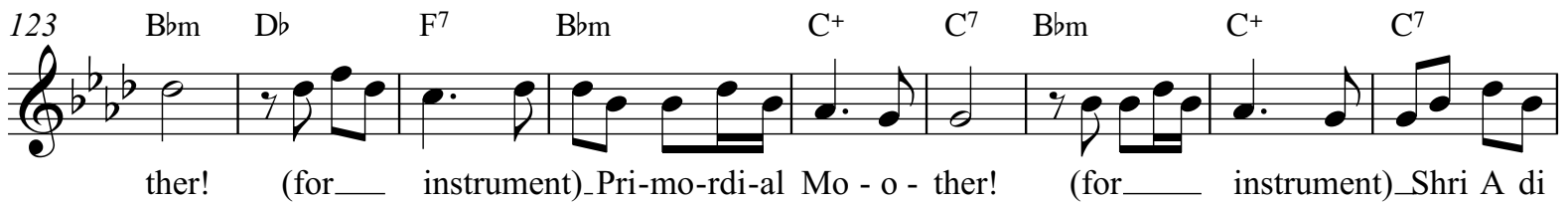
When you are fee-ling CoolBree eze BRAHMA-CHA-A-ITA - A-A NYA BRA

113 B \flat m B $^{\circ}$ 7 C F⁷ B \flat m F⁷



HMA GHA-ITA - A- NYA! You u-nderstand who is Mo - o - ther! Di-vi-ine Mo - o -

123 B \flat m D \flat F⁷ B \flat m C⁺ C⁷ B \flat m C⁺ C⁷



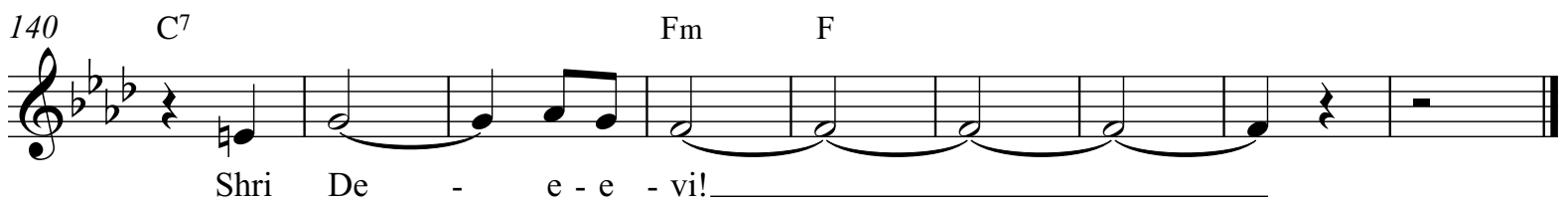
ther! (for instrument) Pri-mo-rdi-al Mo - o - ther! (for instrument) Shri A di

132 C⁺ C⁷ Fm B \flat m⁶ Fm



Sha - a - kti! La - li - i - i - ta - a A - mbi - ka - a Ni-rma - la

140 C⁷ Fm F



Shri De - e - e - vi!