

Shri Nirmala is Password to Divine Internet

Original music from YouTube: Claude Ciari-La Playa 1964

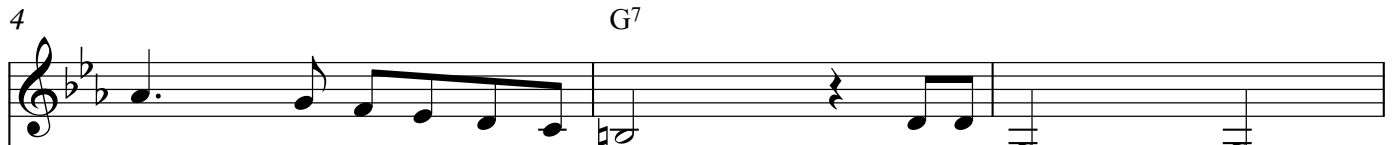
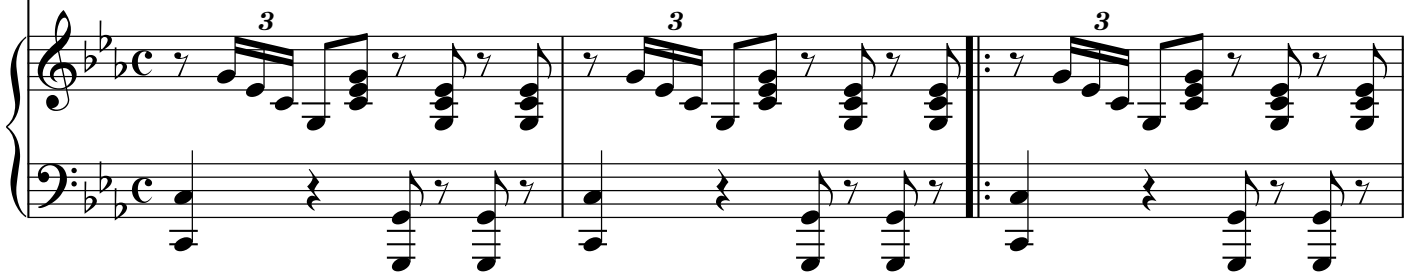
New music version with English and Sanskrit lyrics by Sylvia & Sergey Nirmalite

Cm



1. Shri _____ Ni - rma
4. We _____ keep A -

Moderato ♩=100



la is Pas - sword to Di - vine In - te - rnet! _____
tte ntion in the Bra - hma - randra all the time! _____



To Su - preme Court A - di Sha - kti of God! _____ A - lmi - ghty
Like we co - ntrol co - mpu - ter scree - e - en! _____ Don't let it



10 Cm C7

God! _____ Fee - ling Cool Breeze Truth Ho - ly
 sleep! _____ Fee - ling re - action our Brahma-

13 Fm Cm

Ghost! _____ In o - ur ha - ands!_ O - ver
 ra - ndra! _____ And un - de - rsta - and!_ Where is

16 G Cm

he - ads!_ Ho - ly Ghost! _____ 2.Shri
 Tru - uth!_ Or Un - truth! _____ 5.We

19

G⁷

Ni - rma - la's Name is Pas - sword to Di - vine In - te -
 send _____ me - ssage to Di - vi - ine In - te - rnet by ban

22

rnet!
 dhan!

Where God's Di - re - ctions we ask and find a -
 For ma - ny rea - sons fo - or be - tter

25

Cm

bout _____ so ma - ny things! And we su -
 Life! _____ To solve pro - blems! And have pro -

28 C⁷ Fm

rre-nder to Go-od's Gui - dance! Life be-comes
te-ction! So ma - ny Ble - ssings! So ea - sy

31 Cm G Cm C

Ha - ppy! Joy - ful Li - ife! All the time! 3.Shri Ni - rma -
Li - ife! Ha - ppyLi - ife! Joy - ful Life! 6.(repeat 3)

35 Fm Bb⁷ Eb

la - a - a! Na - mo - o Na - ma-ha!

38 Cm Fm G7

Shri Ni - rma - la - a - a! Na - mo - o

41 Cm C Fm

Na - a-ma-a- ha! Shri Ni - rma - la - a - a!

44 Bb7 Eb Cm Fm

Na - mo - o Na - ma-ha! Shri Ni - rma - la - a - a!

48 $A\flat$ G Cm

Na-mo-o Na - ma - ha! 7.Shri Ni - rma

52 G^7

la Sa - kshat Shri Sa - ha - sra ra Swa - mi - ni O - neness with

56 Cm

God Pro - da - a - a - iy - ni Shri Ma - ta - ji! Shri Ni - rma -

60 C^7 Fm

la A - a - rdha Bi - ndu A - a - di

63 Cm G Cm

Bi - ndu Va - la - ya - a Na - ma - ha!

66 Fm Cm G

Shri A - di Sha kti Ma - ta - ji - i Ni - rma

69 Cm G C

la! Na-a-mo-o Na-ma - ha!